



AIRPORT ADVISORY NOTICE

Notice #2025-017

Date: Thursday, April 17, 2025
Time: April 17, 2025, from 06:00 through May 18 at 06:00
Subject: Runway 16R-34L Shortened with Revised Declared Distances

In Phase #2 of the Cross Taxiway Reconstruction Project:

- **Runway 16R-34L will be shortened from April 17 through May 18, 2025.**
- Approximately 2000 feet of the northern section of runway 16R-34L will be closed for construction activity relating to this project.
- The 16R ILS and associated nav aids will remain de-activated during this phase of work.
- Taxiway "C" will remain open for taxi traffic from East to West and West to East.
- Taxiway "D" will remain open for taxi traffic from East to West and West to East.
- Taxiway "E" will be closed for reconstruction during this phase.
- Taxiway "F" will be closed from Runway 16R/34L to Taxiway B.
- Taxiway "F" will be the northern-most access to Runway 16R from West Side.
- Taxiways "G", "H", "K", "M", "N", "P", "Q" and "R" will remain open for the duration of this phase.
- Taxiway "R" will remain as the southern-most access for Runway 34L.
- **Runway 16L-34R will be closed for the duration of this phase.**

NOTE:

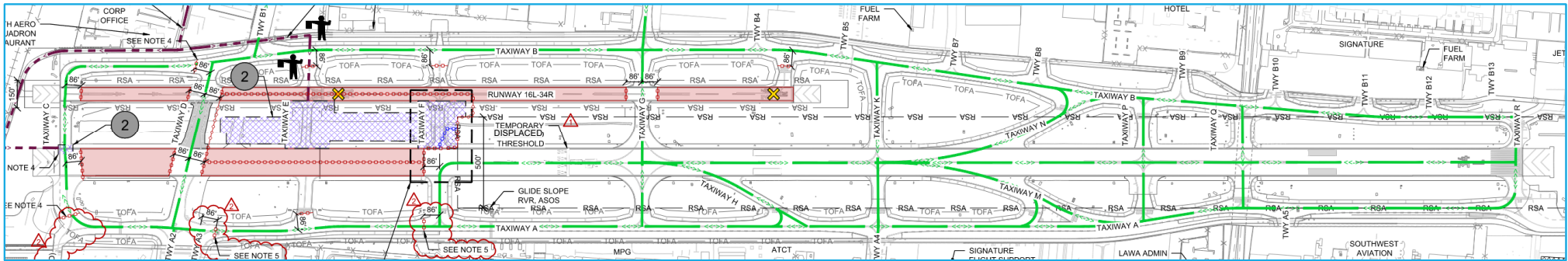
For official NOTAM information, go to <https://pilotweb.nas.faa.gov/PilotWeb/> or contact a Flight Service Specialist at 1-800-WX-Brief (1-800-992-7433).

ADVISORY ISSUED BY	A. Orbelyan
DATE ISSUED	4/10/2025
TIME ISSUED	10:00 AM

For additional information, contact the Van Nuys Airport at (818) 442-6506 or via facsimile at (818) 442-6751

Phase 2 – Taxiway E (east) and F (east) Reconstruction

31 Calendar Days, April 17 to May 18



Runway 16R-34L Declared Distances

	RWY 16R		RWY 34L	
	Existing	Proposed	Existing	Proposed
TODA				
TORA	8,001'	5,824'	8,001'	5,000'
ASDA			7,261'	4,824'
LDA	6,570'	5,224'		

Construction Phase Notes

Construction

1. Work Hours: Daytime, Minimum 10-hr shifts.
2. Work Days: Monday thru Saturday.
3. Duration: 31 Calendar Days

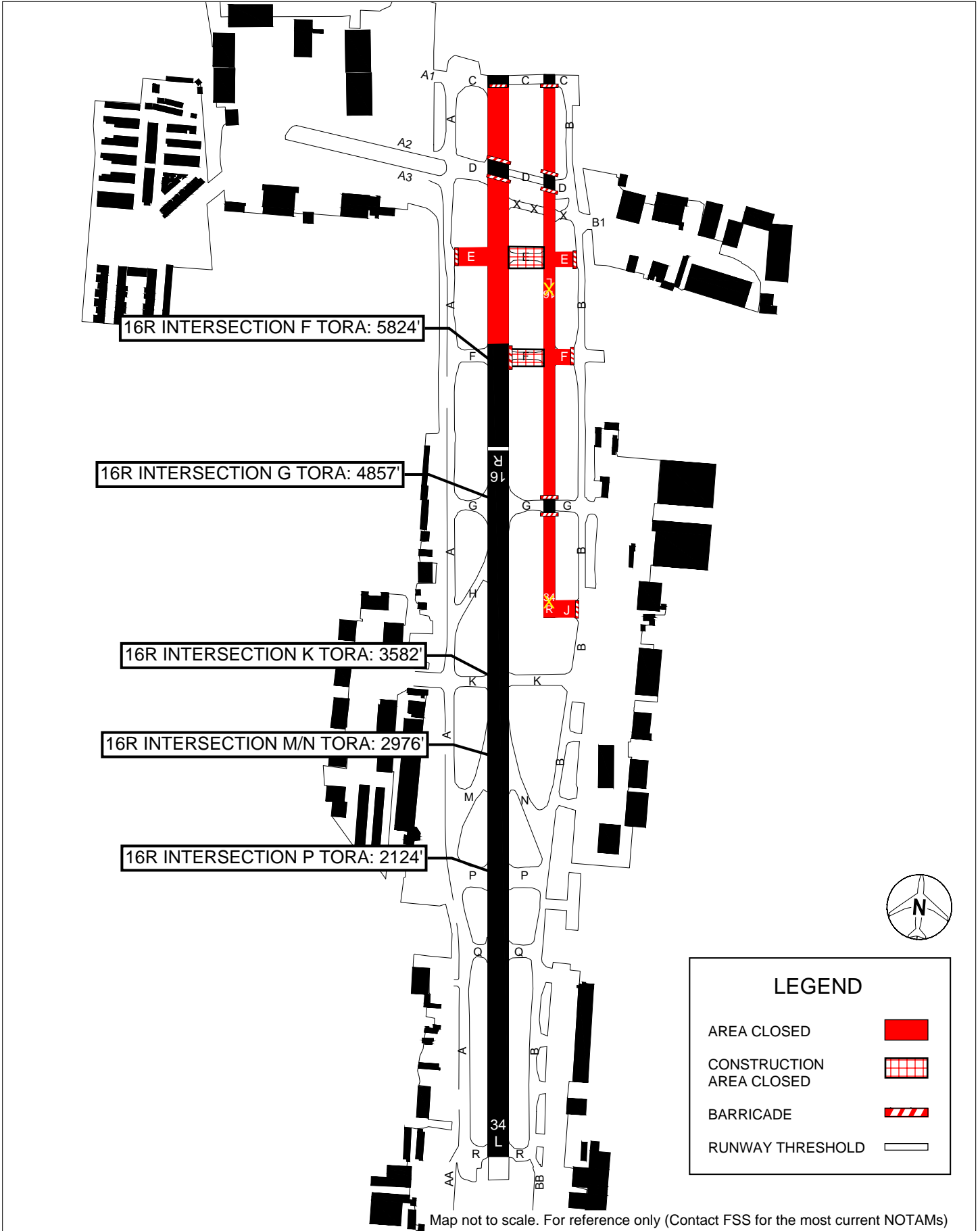
Airfield Operations

1. Runway 16L-34R – Closed
2. Runway 16R-34L – Threshold Displaced, Shortened
 - a. 16R ILS Not Available
 - b. 16R PAPI Not Available, Temporary PLASI Available

VNY AIRPORT

RWY 16R Shortened Declared Distances
Construction Phase 2 Approximately 4/17/25 to 5/20/25

Current as of: 4/4/25



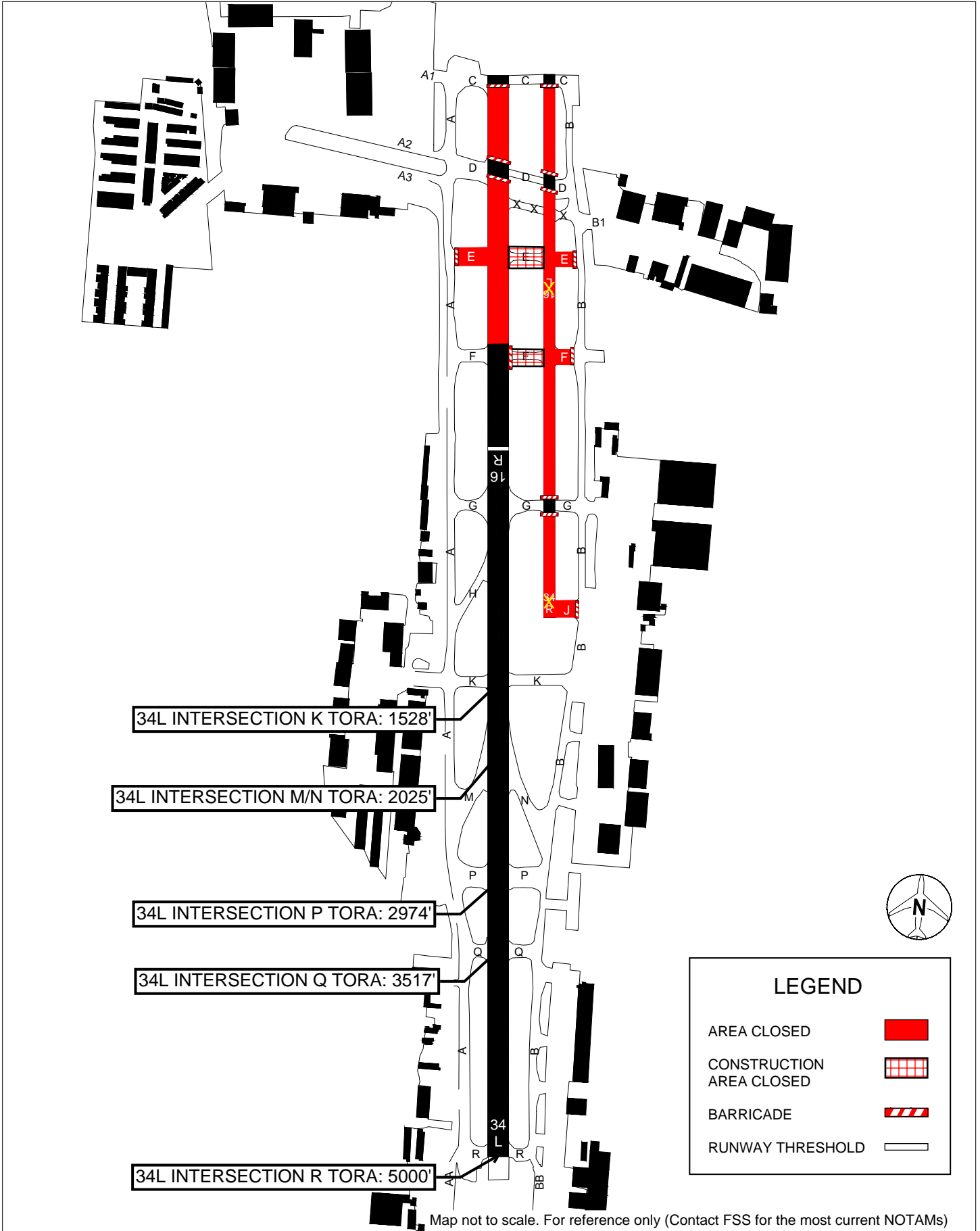
Map not to scale. For reference only (Contact FSS for the most current NOTAMs)

VNY AIRPORT

RWY 34L Shortened Declared Distances

Construction Phase 2 Approximately 4/17/25 to 5/20/25

Current as of: 4/4/25



Map not to scale. For reference only (Contact FSS for the most current NOTAMs)